



Vicplas Holdings

**Electrical Conduits / Underground
Cable Pipes & Accessories**

Vicplas Holdings was founded in 1993 and is a wholly owned subsidiary of Vicplas International Ltd which is listed on the Singapore Stock Exchange. We innovatively design, manufacture and distribute piping systems across diverse industries.

Our products are installed in various areas which include waste and potable water systems for residential homes, schools, commercial and industrial buildings; underground electrical and internal building wire/cable piping systems; and data and signal line piping systems by telecommunications companies.

Mission

Building shareholders value by delivering products in innovative and cost effective ways.

Vision

Creating a customer-centric company, focused in delivery quality products and committed to customer service excellence.

Core Values

- Respectful
- Accountable
- Integrity
- Self-Challenge



Vicplas Holdings Pte Ltd
(a subsidiary of Vicplas International Ltd)

35 Joo Koon Circle, Singapore 629110
Tel: (65) 6262 3888 Fax: (65) 6265 3003
Email: vicplas@vicplas.com.sg
www.vicplas.com

VICPLAS ELECTRICAL CONDUITS



All fittings and accessories are available in Black or White colour



VICPLAS ELECTRICAL CONDUITS & ACCESSORIES

Vicplas Conduits are made from special material that has the desired collapsible strength and yet able to be bent to the required angle during installation. Manufactured in accordance with Standard BS EN 61386-21:2004 specifications. Vicplas High Impact – Heavy Gauge electrical conduits and accessories provide excellent protection for electrical wiring system particularly when encase in concrete.

Vicplas conduits are able to withstand a compression strength of 750N to 1250N. Other advantages of Vicplas uPVC electrical conduit system: Non-conductive, non-corrosive and resistant to most acids and chemicals. Ease in installation by way of push fit joint and cold bending to form the required angles thus reducing labour cost, installation time, etc.

The content of this publication is for general information only. It is the user's responsibility to determine suitability of any products for the purposes intended. Maintaining a policy of continual product development, we reserve the right to change specification, design and material of products listed in this publication without prior notice.

Circular Conduit Box

导管分线匣 (黑色或白色)

单叉司令箱

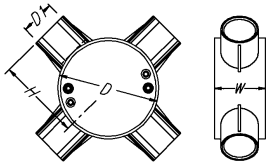
双叉司令箱

曲叉司令箱

三叉司令箱

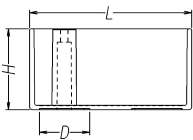
四叉司令箱

	1-way Terminal	2-way Through Box	2-way Angle Box	3-way Tee Box	4-way Intersection
Code	E20W	TW20W	A20W	T20W	C20W
	E25W	TW25W	A25W	T25W	C25W
Size		D1	D	H	W
20mm		20	65	53.5	32
25mm		25	65	58.5	32



Looping Box

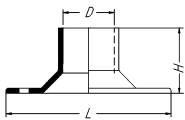
电线循环盒



Code	Size	D	H	L
LPW	20mm	20	32	65

Dome Cover

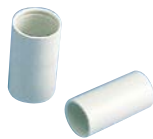
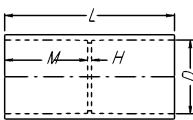
电线圆顶罩



Code	Size	D	H	W
DC20W	20mm	20	32	65
DC25W	25mm	25	32	65

Socket

接头 (黑色或白色)



Code	Size	D	M	L	H
HGG20LW	20mm	20	26	53.5	1.5
HGG25W	25mm	25	25	51.5	1.5
HGG32W	32mm	32	32	66	2

Spring Bender

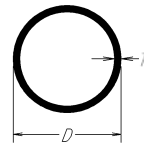
导线管子助弯弹簧



Code	Size
BS20-UK	20mm
BS25-UK	25mm
BS32-UK	32mm

High Impact - (442112) Heavy Gauge Conduits

导线管子 (黑色或白色)

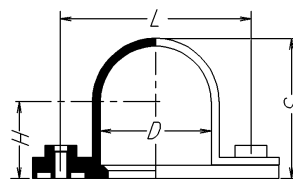


Code	Size	D	T	Grade
V-C 20WPLS	20mm	20	1.6	HI
V-C 25WPLS	25mm	25	1.8	HI
V-C 32WPLS	32mm	32	2.3	HI
V-C 20WPLS-MI	20mm	20	1.4	MI
V-C 25WPLS-MI	25mm	25	1.5	MI

***HI:** 442112 HIGH IMPACT **MI:** 332112 MEDIUM IMPACT

Bar Saddle with Screw

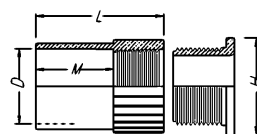
马鞍管夹 (黑色或白色)



Code	Size	D	H	L	S
S20W	20mm	20	14	42.5	26
S25W	25mm	25	16.5	42.5	31

Female Adaptor

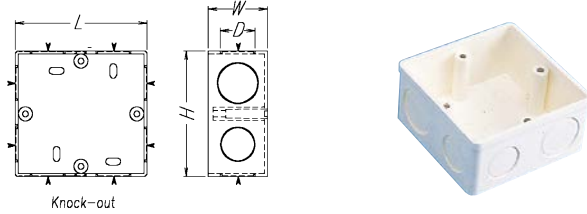
杯梳 (黑色或白色)



Code	Size	D	H	L	M
KBA20W	20mm	20	24	34	20
KBA25W	25mm	25	31	41	27

1-Gang PVC Knockout Box

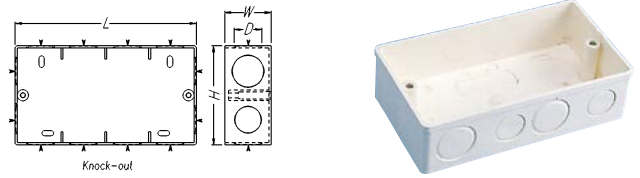
胶暗箱 (黑色或白色)



Code	Size	D	W	H	L
GKB1W	1 GANG	20/25	37	75	75

2-Gang PVC Knockout Box

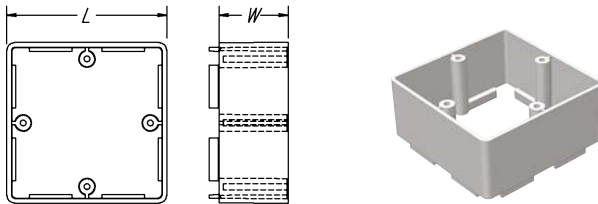
双连胶暗箱 (黑色或白色)



Code	Size	D	W	H	L
GKB2W	2 GANG	20/25	37	75	135

1-Gang PVC Knockout Box Extension Ring

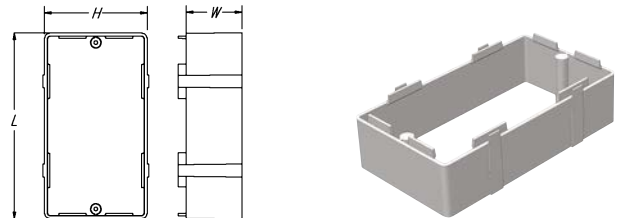
胶暗盒延伸环 (黑色或白色)



Code	Size	W	L
GKB1ERW	1 GANG	32.5	75

2-Gang PVC Knockout Box Extension Ring

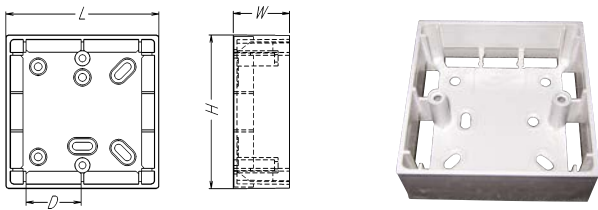
双连胶暗盒延伸环 (黑色或白色)



Code	Size	W	H	L
GKB2ERW	2 GANG	32.5	75	135

1-Gang PVC Surface Mounting Box

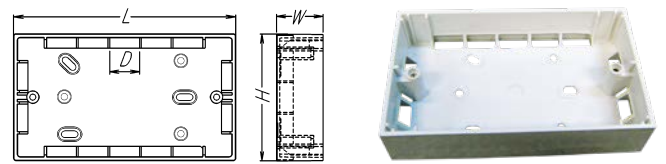
接线盒 (黑色或白色)



Code	Size	D	W	H	L
SMB1G	1 GANG	30	32	87	87

2-Gang PVC Surface Mounting Box

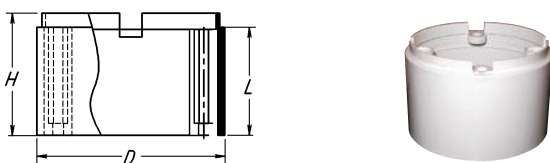
双连接线盒 (黑色或白色)



Code	Size	D	W	H	L
SMB2G	2 GANG	20	32	87	147

Extension Ring

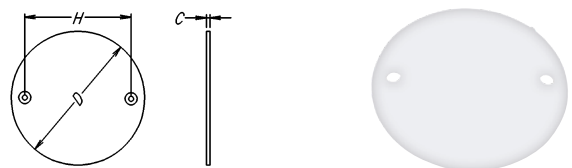
引伸圆环 (黑色或白色)



Code	Size	D	H	L
ER38W	38mm	66	43	38
ER50W	50mm	66	55	50

Circular Lid

司令箱盖 (黑色或白色)



Code	Size	D	H	C
CLW	38mm	65	50.5	1.5

VICPLAS CABLE PIPES



LEAD FREE

**VICPLAS
ELECTRICAL
CABLE PIPES &
TELECOM PIPES**

Vicplas is committed to a sustainable future by adopting green practices as we undertake the role for a cleaner and greener environment. At Vicplas, we are dedicated to producing Lead Free products. Taking on the responsibility to create awareness, we promote green consciousness and champion best environment practices to engage going green.

ELECTRICAL CABLE PIPES

The local authorities of Singapore, namely the Power Grid and the Singapore Telecom use uPVC pipes as protection to the electrical and telecommunication cables respectively.

The electrical cables are encase in SS141 (Equivalent to BS3506 or AS1477) Class B uPVC pipes before being haunch in concrete. The pipes serve as a formwork to the cable installation and as a protection against future excavation and soil movement. It also allows for future connection/extension to be made.

SS141 Class B Equivalent to BS3506 & AS1477

Nominal Size		Mean Outside	Wall Thickness
(inch)	(mm)	Dia. (mm)	(mm)
4"	100	114.1	3.4
6"	155	168.0	4.5
8"	200	218.8	5.3
10"	250	272.6	6.6

SS141 Class C Equivalent to BS3506 & AS1477

Nominal Size		Mean Outside	Wall Thickness
(inch)	(mm)	Dia. (mm)	(mm)
2"	50	60.2	2.5
4"	100	114.1	4.5
6"	155	168.0	6.6
10"	250	272.6	9.7

TELECOM PIPES

The Singapore Telecom / Starhub Cable / M1 uses the SS272:2012 uPVC pipes for telecommunication fibre optics cable installation

SS272:2012 Equivalent to BS4660 & AS1260

Nominal Size		Mean Outside	Wall Thickness
(inch)	(mm)	Dia. (mm)	(mm)
4"	110	110.0	3.2

VICPLAS UPVC PIPES



LEAD FREE

uPVC Pipe for Industrial Uses SS141: 2013 Equivalent to BS 3506:1969

Nominal Size		Mean OD (min.) (mm)	Wall Thickness				
(inch)	(mm)		Class B 0.6MPa (mm)	Class C 0.9MPa (mm)	Class D 1.2MPa (mm)	Class E 1.5MPa (mm)	Class O Non Pressure (mm)
2	50	60.2	-	2.5	3.1	3.9	1.8
2-1/2	65	75.0	-	3.0	3.9	4.8	1.8
3	80	88.7	2.9	3.5	4.6	5.7	1.8
4	100	114.1	3.4	4.5	6.0	7.3	2.3
5	125	140.0	3.8	5.5	7.3	9.0	2.6
6	155	168.0	4.5	6.6	8.8	10.8	3.1
8	200	218.8	5.3	7.8	10.3	12.6	3.1
9	225	244.1	5.9	8.7	11.5	14.1	3.1
10	250	272.6	6.6	9.7	12.8	15.7	3.1
12	300	323.4	7.8	11.5	15.2	18.7	3.1

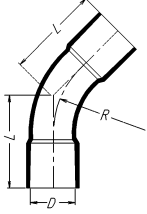
Japanese Industrial Standard uPVC Pipes JIS K-6741: 2007 Class VP and Class VU

Nominal Size (inch)	Nominal Size (mm)	Mean OD (mm)	Wall Thickness (min.)	
			Class VP / AW	Class VU / AE
3/8	13	17.8	2.2	1.8
1/2	16	21.8	2.7	1.8
3/4	20	25.8	2.7	1.8
1	25	31.8	3.1	1.8
1-1/4	30	37.8	3.1	1.8
1-1/2	40	47.8	3.6	1.8
2	50	59.8	4.1	1.8
2-1/2	65	75.7	4.1	2.2
3	75	88.7	5.5	2.7
4	100	113.6	6.6	3.1
5	125	139.2	7.0	4.1
6	150	164.5	8.9	5.1
8	200	215.3	10.3	6.5
10	250	266.1	12.7	7.8
12	300	317.0	15.1	9.2



45° Long Radius Bend (Fabricated)

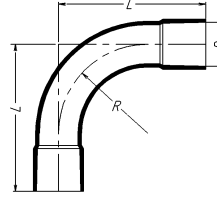
45度电缆管长型弯头 (手工制造)



Code	Size	D	L	R
AEEL4045	1.1/2"	48	100	130
AEEL8045	3"	89	224	250
EL5045F.CLC	2"	60.5	140	150
EL10045F.CLB	4"	114	245	300
EL15045F.CLB	6"	168	390	500
EL11045R300	4"	110	245	300

90° Long Radius Bend (Fabricated)

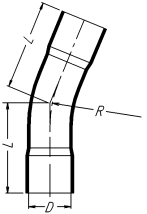
90度电缆管长型弯头 (手工制造)



Code	Size	D	L	R
AEEL4090	1.1/2"	48	195	130
AEEL8090	3"	89	370	250
EL5090F.CLC	2"	60.5	225	150
EL10090F.CLB	4"	114	465	300
EL15090F.CLB	6"	168	650	460
EL11090R300	4"	110	410	300
EL11090R500SH(W)	4"	110	675	520

22.5° Long Radius Bend (Fabricated)

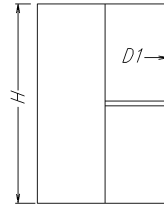
22.5度电缆管长型弯头 (手工制造)



Code	Size	D	L	R
EL110225F	4"	110	220	300
EL100225F.CLB	4"	114	220	300
EL150225F.CLB	6"	168	370	1160
EL110225R950SH(W)	4"	110	480	950

Socket (Cable & Telecom)

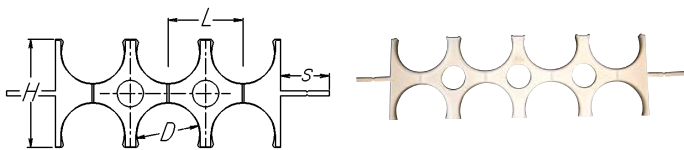
直接头



Code	Size	D1	H
AES40	1 1/2"	48	88.5
AES50	2"	60.5	105
AES100	4"	114	103
TS110	4"	110	180
S150F.CLB	6"	168	164

Telecom Pipe Spacer

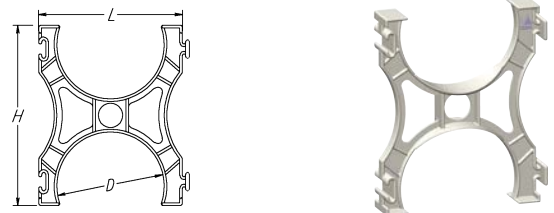
通信管托架



Code	Size	D	H	L	S
PS100X4ARCH	4"	110	172	135	86
PS100X6ARCH	4"	110	172	135	86
PS100X8ARCH	4"	110	172	135	86

Pipe Spacer - For 6" Cable Pipe

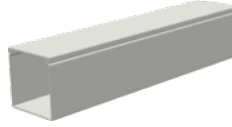
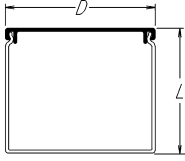
电缆管托架



Code	Size	D	H	L
PS150X2ARCH141	6"	168	272	217

Upvc Trunking - For Wiring & Air-Con Pipe

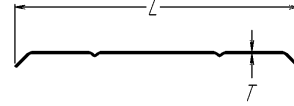
电线/冷气管盖



Code	Size	D	L
VTR2010	20 x 10	20	10
VTR3213	32 x 13	32	13
VTR4020DC	40 x 20	40	20
VTR5032	50 x 32	50	32
VTR5050	50 x 50	50	50
VTR7560	75 x 60	75	60
VTR100100	100 x 100	100	100
VTR150100	150 x 100	150	100

Cable Cover Plate

电缆板盖 (黑色或黄色)

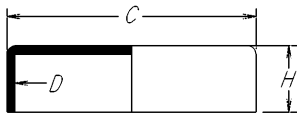


Code	Size	Colour	L	T	Length
CP1201Y	120mm	Yellow	120	2	1M
CP1501Y	150mm	Yellow	150	2	1M
CP1721Y	172mm	Yellow	172	2	1M
CP2721Y	272mm	Yellow	272	2	1M
CP2721R	272mm	Red	272	2	1M
CP1201B	120mm	Black	120	2	1M
CP1501B	150mm	Black	150	2	1M
CP1721B	172mm	Black	172	2	1M

* Other colours can produce with MOQ

Telecom End Cap

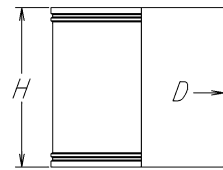
管盖



Code	Size	D	C	H
TEC110	4"	110	117	52

Cable Pipe Loose Socket

电线管活络接头



Code	Size	D	H
LS150F.CLB	6"	168	164

Puddle Flange Pipe or Flange Socket for Cast In

PVC管 / 管嘴附防滑法兰套 (手工订制)



Code	Size	Colour
N.A.	Custom Make	

Bell Mount Socket

凸缘管 (手工订制)



Code	Size	Colour
N.A.	Custom Make	

Corrugated Flexible Pipe (Non Flame Retardant)

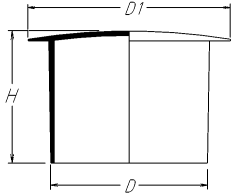
波纹管



Code	Size
CFP16X50M-W	16
CFP20X50M-W	20
CFP25X50M-W	25
CFP32X25M-W	32

End Plug

管端插座



Code	Size	D	D1	H
EP150.141	6"	150	185	129

Mandrel (Wooden)

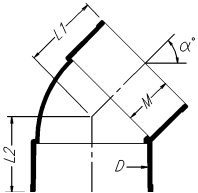
心轴测试仪



Code	Size	OD	L
MD150W	6"	130	600
MD110W	4"	83	460

45° AE Elbow

45度AE弯头



Code	Size	D	M	L1	L2
AEE10045	4"	114	50	77	77

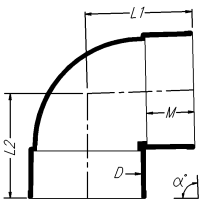
VARIOUS TYPES OF AE/AW FITTINGS

各种类型的AE/AW管件



90° AE Elbow

90度AE弯头



Code	Size	D	M	L1	L2
AEE10090	4"	114	50	112	112

Rigid Upvc Sub-Soil Pipe (size : 2" to 12")

Upvc 地基排水管 (从2寸到12寸)



Solvent Cement

PVC溶剂



Code	Size	Colour
SC500VW	500ml	(透明) Clear
SC500VB	500ml	(蓝色) Blue

ELECTRICAL CONDUITS / UNDERGROUND PIPING SYSTEM

NEW 'BTO' PUBLIC HOUSING

- ANG MO KIO N2 C31
- ANG MO KIO N2 C32A
- BEDOK N2 C11
- BEDOK N4 C9
- BEDOK N5 C19
- BEDOK TOWN CENTRE C8
- BIDADARI C1, 2 & 3
- BIDADARI C10, 11 & 12
- BIDADARI C15 & 16
- BIDADARI C18
- BIDADARI C4
- BIDADARI C5
- BIDADARI C6 & 7
- BIDADARI C8 & 9
- BISHAN EAST C36
- BUKIT BATOK N1 C15
- BUKIT BATOK N4 C10 & 11
- BUKIT BATOK N4 C12
- BUKIT BATOK N4 C18, 19, 20 & 21
- BUKIT BATOK N4 C22 & 23
- BUKIT PANJANG N6 C12 & 15
- BUKIT PANJANG N6 C13 & 14
- CHOA CHU KANG N1 C15
- CHOA CHU KANG N1 C16
- CHOA CHU KANG N8 C11 | PROJECT E
- CLEMENTI N2 C3
- CLEMENTI N4 C12
- CLEMENTI N8 C1 | PROJECT B
- DAWSON C3
- DAWSON C4
- DAWSON C5
- DAWSON C6
- DAWSON C7
- GEYLANG C15
- GEYLANG C26A
- GEYLANG C43B
- GUILLEMARD C1A
- HOUGANG N3 C13
- HOUGANG N9 C16, 17 & 19
- HOUGANG N9 C18
- HOUGANG N9 C20
- HOUGANG N9 C21
- JURONG EAST N2 C25
- JURONG WEST N1 C29B
- JURONG WEST N2 C20
- JURONG WEST N9 C18
- JURONG WEST N9 C20
- KALLANG WHAMPOA C21
- KALLANG WHAMPOA C43
- KALLANG WHAMPOA C47
- KALLANG WHAMPOA C57
- KALLANG WHAMPOA C58
- PASIR RIS N5 C26 & 27
- PUNGGOL EAST C48
- PUNGGOL EAST C49
- PUNGGOL NC1
- PUNGGOL NORTH C1 & 2
- PUNGGOL NORTH C11 & 12
- PUNGGOL NORTH C13
- PUNGGOL NORTH C14
- PUNGGOL NORTH C15
- PUNGGOL NORTH C3
- PUNGGOL NORTH C4
- PUNGGOL NORTH C5
- PUNGGOL NORTH C6 & 7
- SEMBAWANG N1 C1
- SEMBAWANG N1 C13
- SEMBAWANG N1 C2 & 3
- SEMBAWANG N1 C6 & 12
- SEMBAWANG N1 C9
- SEMBAWANG N2 C3, 4 & 5
- SEMBAWANG N3 C7
- SENGKANG N1 C30
- SENGKANG N3 28
- SENGKANG N3 28A
- SENGKANG N3 29
- SENGKANG N4 C22 & 23
- SENGKANG N4 C30
- SENGKANG N4 C31 | PROJECT C
- SENGKANG N4 C39 & 40 | PROJECT C
- SENGKANG N4 C41
- SKYTERRACE @ DAWSON
- SKYVILLE @ DAWSON
- TAMPINES N4 C28
- TAMPINES N6 C13 & 14
- TAMPINES N6 C15 & 16
- TAMPINES N6 C17 & 18
- TAMPINES N6 C19
- TAMPINES N6 C1A & 1B

- TAMPINES N6 C20
- TAMPINES N6 C2A
- TAMPINES N6 C2B
- TAMPINES N6 C3
- TAMPINES N6 C4 & 5
- TAMPINES N6 C8, 9 & 10
- TAMPINES N8 C31
- TAMPINES N8 C32A & 32B
- TAMPINES N8 C32A & 32B
- TAMPINES N9 C13 & 14
- TAMPINES N9 C15 & 16
- TAMPINES N9 C18
- TENGAH GARDEN C1
- TENGAH GARDEN C2
- TENGAH GARDEN C5
- TENGAH GARDEN C6
- TENGAH PARK C2
- TENGAH PLANTATION C1
- TENGAH PLANTATION C2
- TENGAH PLANTATION C3
- TENGAH PLANTATION C4
- TOA PAYOH N1 C25 & 25A
- TOA PAYOH N1 C26A
- TOA PAYOH N4 C30
- WOODLANDS N1 C25
- WOODLANDS N5 C16
- WOODLANDS N5 C23
- WOODLANDS N5 C24
- WOODLANDS N7 C27
- WOODLANDS N7 C33
- YISHUN N3 C25
- YISHUN N3 C26
- YISHUN N4 C17
- YISHUN N4 C18
- YISHUN N4 C19
- YISHUN N4 C20
- YISHUN N4 C21A & 21B
- YISHUN N4 C22

PRIVATE PROJECTS

- 33 RESIDENCES
- 35 GILSTEAD
- AFFINITY
- ARENA RESIDENCES
- BELGRAVIA GREEN
- CASA AL MARE
- CLAVON CONDO
- DAIRY FARM RESIDENCES
- DUNEARN 386
- FORET AT BUKIT TIMAH
- FOURTH AVENUE RESIDENCES
- FYVE DERBYSHIRE
- HAUS ON HANDY
- JADE SCAPE
- JERVOIS PRIVE
- JUI RESIDENCES
- JUNIPER HILL
- KENT RIDGE HILL RESIDENCES
- KI RESIDENCES
- KOPAR AT NEWTON
- LEEDON GREEN
- M CONDO
- MAYFAIR GARDENS
- MAYFAIR MODERN
- MEYERHOUSE
- MIDTOWN MODERN
- MIDWOOD
- MONT BOTANIK
- MOOI RESIDENCES
- NEU @ NOVENA
- NORMANTON PARK CONDO
- NYON
- OFFICE - GUOCO MIDTOWN BAY
- OLA EC
- ONE BERNAM
- ONE HOLLAND VILLAGE RESIDENCES
- ONE MEYER
- ONE PEARL BANK
- PARC CANBERRA
- PARC CENTRAL
- PARC CLEMATIS
- PARC ESTA
- PARC KOMO
- PARKSUITES
- PARKWOOD COLLECTIONS
- PROVENCE RESIDENCE
- RESIDENCE TWENTY TWO
- RIVERFRONT RESIDENCES
- RIVIERE
- ROYALGREEN CONDO
- SEA PAVILION RESIDENCES

- SENGKANG CENTRAL RESIDENCES
- SOUTH AVENUE RESIDENCES
- SUNSTONE HILL @ PASIR PANJANG
- THE ATELIER
- THE AVENIR
- THE ESSENCE
- THE FLORENCE RESIDENCES
- THE HYDE
- THE JOVELL
- THE LANDMARK
- THE TRE VER
- THE WATERGARDENS
- TREASURE AT TAMPINES
- UPTOWN @ FARRER
- URBAN TREASURES
- VAN HOLLAND
- VERANDAH RESIDENCES
- VERTICUS CONDO
- VIEW AT KISMIS
- WHISTLER GRAND
- WOODLEIGH RESIDENCES

SCHOOL PROJECTS

- ANDERSON JUNIOR COLLEGE
- CAMPUS @ NUS
- CANTONMENT PRIMARY SCHOOL
- DA ZHONG SECONDARY SCHOOL
- ITE @ ANG MO KIO
- JURONGVILLE SECONDARY SCHOOL
- KONG HWA SECONDARY SCHOOL
- MAHA BODHI PRIMARY SCHOOL
- MANJUSURI SEC SCHOOL
- NORTHLIGHT SCHOOL
- NEXUS INTERNATIONAL SCHOOL
- NTU LEARNING HUB
- OVERSEAS FAMILY SCHOOL
- PATHLIGHT SCHOOL
- PUNGGOL GREEN PRIMARY SCHOOL
- PUNGGOL SECONDARY SCHOOL
- SINGAPORE INSTITUTE OF TECHNOLOGY CAMPUS AT PUNGGOL NORTH
- SINGAPORE POLY AT DOVER RD.
- UNITED WORLD COLLEGE OF S.E.A
- WESTCOM
- WOODLAND PRIMARY SCHOOL
- XINGNAN PRIMARY SCHOOL
- XINMIN SECONDARY SCHOOL
- YISHUN COMMUNITY SCHOOL
- CHANGKAT PRIMARY SCHOOL
- CHIJ - OUR LADY OF NATIVITY
- EUNOIA JUNIOR COLLEAGUE
- FERVALE PRIMARY SCHOOL
- GREENDALE SECONDARY SCHOOL
- KRANJI SECONDARY SCHOOL
- TANJONG KATONG GIRLS' SCHOOL

CIVIL ENGINEERING

PROJECTS

- 22KV SUB-STATION - SUNGEI TENGAH RD
- 66KV SUB-STATION - TAGORE RD
- 66KV SUB-STATION - TAMPINES LINK
- BCA - DESIGN & BUILD OF VEHICULAR BRIDGE, ROADS AT PULAU PUNGGOL BARAT
- CAG - CHANGI AIRPORT TERMINAL 5 - TAXIWAYS
- HDB - CONST. OF ROADS & ROADSIDE DRAINS - TENGAH TOWN
- HDB - CONST. OF ROADS & SEWERS - TAMPINES SOUTH
- HDB - CONST. OF ROADS AT PUNGGOL NORTH
- HDB - IMPROVEMENT WORKS TO SURFACE CARPARK (BATH 62 - 80)
- HDB - INFRASTRUCTURE WORKS AT LOWER SELETAR
- HDB - POLDER DEVELOPMENT AT PULAU TEKONG
- HDB - WIDENING OF MCNAIR / TOWNER RD
- JTC - INFRASTRUCTURE WORKS - ANG MO KIO IND. PARK 3
- JTC - INFRASTRUCTURE WORKS - BULIM (PHASE 1)
- JTC - INFRASTRUCTURE WORKS - CLEANTECH LOOP PHASE 1
- JTC - INFRASTRUCTURE WORKS - KAKI BUKIT
- JTC - INFRASTRUCTURE WORKS - LORONG HALUS PHASE 2
- JTC - INFRASTRUCTURE WORKS - TUAS

- FINGER PHASE 1
- JTC - INFRASTRUCTURE WORKS AT KRANJI ROAD
- JTC - INFRASTRUCTURE WORKS AT ONE NORTH CRES
- JTC - INFRASTRUCTURE WORKS AT SELETAR AEROSPACE AVE
- JTC - ROAD WIDENING AT SENOKO DRIVE
- LTA - AM102 - ROUND ISLAND ROUTE (RIR) PARK CONNECTOR | INTER-TOWN CYCLING ROUTE
- LTA - DE113 - INFRASTRUCTURE WORKS AT HILLVIEW, DAIRY FARM & TUAS AREA
- LTA - DE122 - ROADWORKS AT BEDOK NORTH / NEW UPPER CHANGI RD
- LTA - DE133 - BUS DEPOTS AT SENGKANG WEST
- LTA - DE135 - CONSTRUCTION OF NEW ROAD BTWN SELETAR NORTH AND PUNGGOL EAST
- LTA - DE136 - ROADWORKS AT TANAH MERAH COAST RD
- LTA - DE137 - INFRASTRUCTURE ENHANCEMENT AT VARIOUS LOCATION
- LTA - DE142 - BUS DEPOT AT GALI BATU
- LTA - ER381 - ROADWORKS AT BALMORAL / BUKIT TIMAH RD
- LTA - ER489 - CONST. OF UNDERPASS - PIE EXIT 26A
- LTA - ER497 - WIDENING OF ROAD AT TAMPINES AVE 7
- LTA - PL193 - CYCLING PATH
- LTA - PL198 - CYCLING PATH
- LTA - PL203 - CYCLING PATH
- LTA - PL217 - CYCLING PATH AT TOA PAYOH TOWN
- LTA - PT247 - UPGRADING OF WOODLANDS BUS INTERCHANGE
- LTA - RC118 - CONSTRUCTION OF VIADUCT FROM TPE TO PIE & UPPER CHANGI ROAD EAST
- LTA - RD320 - EXPAND OF BUS INTERCHANGE AT ANG MO KIO
- LTA - T235 - RAPID TRANSIT SYSTEM LINK
- LTA - TR315 - CONST. OF SILVER ZONES
- PIPE LAYING PROJECTS - SINGTEL / NETLINK TRUST / STARHUB
- PUB - ESTATE UPGRADING PROGRAMME (EUP) BATCH 9
- PUB - IMPROVEMENT TO OUTLET DRAINS AT STADIUM BOULEVARD

COMMERCIAL PROJECTS

- ASM FRONT-END MANUFACTURING FACTORY
- BEDOK MALL
- CT FOODCHAIN
- FUNAN MALL
- GRAB HEADQUARTER
- GUOCO MIDTOWN | MIDTOWN BAY
- INSPACE
- JTC SPACE @ AMK
- JTC SPACE @ BULIM
- KHATIB HOME TEAM NS CLUBHOUSE
- KINGSVILLE
- MANDAI BIRD PARK
- MANDAI RESORT
- MEGA @ WOODLANDS
- MONDRIAN HOTEL
- NATIONAL CANCER CENTRE
- OUTWARD BOUND SINGAPORE (OBS) CONEY ISLAND & LORONG HALUS
- PRE-FAB FACTORY - SUNWAY
- PROXIMA @ GAMBAS
- PUNGGOL DIGITAL DISTRICT
- PUNGGOL FIRE STATION & NEIGHBOURHOOD POLICE CENTRE
- PUNGGOL TOWN HUB
- RAFFLES SENTOSA RESORT & SPA
- RAINFOREST PARK NORTH & SOUTH
- SHORT STREET HOTEL
- SINGAPORE GENERAL HOSPITAL | OUTRAM MEDICAL CAMPUS
- SURBANA JURONG CAMPUS
- TUAS NEXUS | INTEGRATED WASTE MANAGEMENT FACILITY (WWMF) | PHASE 1
- WILMAR HEADQUARTER ONE-NORTH
- WOODLANDS INTEGRATED HEALTHCARE CAMPUS (WIHC) | WOODLANDS HEALTH CAMPUS

icPlas

⊙ Electrical Conduits & Accessories

⊙ Cable Pipes & Fittings

⊙ Cable Cover Plates

⊙ Electrical & Air-Con Trunking



Vicplas Holdings Pte Ltd
(a subsidiary of Vicplas International Ltd)

35 Joo Koon Circle, Singapore 629110.
Tel: (65) 6262 3888 Fax: (65) 6265 3003
Email: vicplas@vicplas.com.sg



Copyright @ Vicplas Holdings Pte Ltd, All right reserved.

No part of this publication shall be copied, reproduced, stored in retrieval system or transmitted in any form without prior permission of the publisher. (01/2022)